

# PRODUCT INFORMATION PACKET

Model No: 5KC49NN2130Y

Catalog No: C274

1 HP General Purpose Motor, 1 phase, 3600 RPM, 115/230 V, 56 Frame, TEFC  
Single Phase TEFC Motors



Regal and Marathon are trademarks of Regal Beloit Corporation or one of its affiliated companies.  
©2020 Regal Beloit Corporation, All Rights Reserved. MC017097E

REGAL



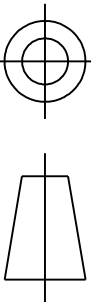
### Nameplate Specifications

|                        |                   |                            |                                    |
|------------------------|-------------------|----------------------------|------------------------------------|
| Output HP              | <b>1 Hp</b>       | Output KW                  | <b>0.75 kW</b>                     |
| Frequency              | <b>60 Hz</b>      | Voltage                    | <b>115/230 V</b>                   |
| Current                | <b>13.0,6.5 A</b> | Speed                      | <b>3450 rpm</b>                    |
| Service Factor         | <b>1.15</b>       | Phase                      | <b>1</b>                           |
| Efficiency             | <b>68.5 %</b>     | Power Factor               | <b>0</b>                           |
| Duty                   | <b>Continuous</b> | Insulation Class           | <b>B</b>                           |
| Design Code            | <b>-</b>          | KVA Code                   | <b>L</b>                           |
| Frame                  | <b>56</b>         | Enclosure                  | <b>Totally Enclosed Fan Cooled</b> |
| Thermal Protection     | <b>MAN</b>        | Ambient Temperature        | <b>40 °C</b>                       |
| Drive End Bearing Size | <b>6203</b>       | Opp Drive End Bearing Size | <b>6203</b>                        |
| UL                     | <b>Recognized</b> | CSA                        | <b>Yes</b>                         |
| CE                     | <b>N</b>          |                            |                                    |

### Technical Specifications

|                   |                                      |                       |                                   |
|-------------------|--------------------------------------|-----------------------|-----------------------------------|
| Electrical Type   | <b>Capacitor Start Induction Run</b> | Starting Method       | <b>SM</b>                         |
| Poles             | <b>2</b>                             | Rotation              | <b>Counterclockwise/Clockwise</b> |
| Mounting          | <b>Rigid Base</b>                    | Motor Orientation     | <b>ANY</b>                        |
| Drive End Bearing | <b>BALL</b>                          | Opp Drive End Bearing | <b>Ball</b>                       |
| Frame Material    | <b>Rolled Steel</b>                  | Overall Length        | <b>12.43 in</b>                   |
| Frame Length      | <b>7.15 in</b>                       | Shaft Diameter        | <b>0.630 in</b>                   |
| Shaft Extension   | <b>1.88 in</b>                       |                       |                                   |
| Outline Drawing   | <b>52A107631P6</b>                   | Connection Drawing    | <b>52A105383BA</b>                |

This is an uncontrolled document once printed or downloaded and is subject to change without notice. Date Created:03/11/2020

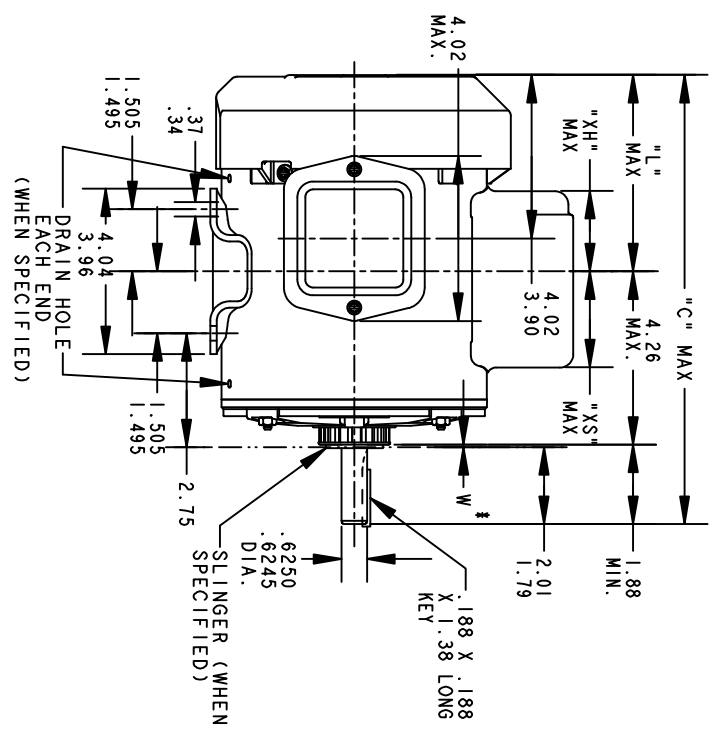
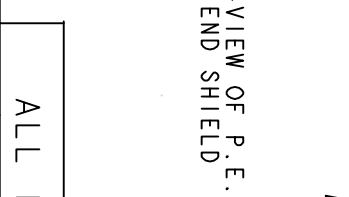
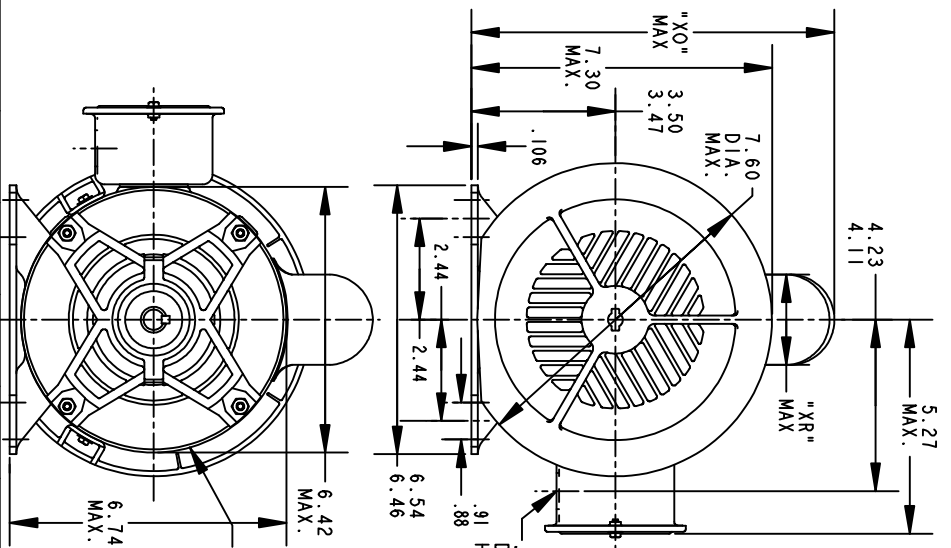


THIRD ANGLE PROJECTION

REVISIONS

| REV. | DESCRIPTION               | DATE     | APPROVED  |
|------|---------------------------|----------|-----------|
| 16   | AADED PT# 9 PER DSI0-0516 | 05/07/10 | PRAVEEN.K |

52A107631 15  
DRAWING NO. A



ALL DIMENSIONS ARE IN INCHES

\*W IS A VARIABLE CLEARANCE DUE TO VARIATIONS IN PARTS AND ASSEMBLY

| P | TYPE | GE SIZE | NEMA FR. | "C"   | "L"  | "XH" | "XO" | "XR" | "XS" | MIN. SHELL |
|---|------|---------|----------|-------|------|------|------|------|------|------------|
| 9 | KC   | 49      | 56       | 12.96 | 6.81 | 3.58 | 8.24 | 1.60 | 2.17 | 7.68       |
| 8 | KC   | 48      | 56       | 13.71 | 6.05 | 4.33 | 8.26 | 2.40 | 2.92 | 8.43       |
| 7 | KC   | 49      | 56       | 11.43 | 5.28 | 2.00 | 8.26 | 1.60 | 2.48 | 6.15       |
| 6 | KC   | 49      | 56       | 12.43 | 6.28 | 3.51 | 8.22 | 1.60 | 2.24 | 7.15       |
| 5 | KC   | 49      | 56       | 12.43 | 6.28 | 3.51 | 8.94 | 2.40 | 2.24 | 7.15       |
| 4 | KC   | 49      | 56       | 12.96 | 6.81 | 3.58 | 8.94 | 2.40 | 2.17 | 7.68       |
| 3 | KC   | 46      | 56       | 11.83 | 5.68 | 2.91 | 8.94 | 2.40 | 2.84 | 6.55       |
| 2 | KC   | 46      | 56       | 11.83 | 5.68 | 2.91 | 8.84 | 2.22 | 1.63 | 6.55       |
| 1 | KC   | 42      | 56       | 11.00 | 4.85 | 2.08 | 8.84 | 2.22 | 2.46 | 5.72       |

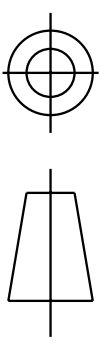
REGAL-BELOIT CORPORATION

OUTLINE

GENERAL PURPOSE MOTOR TEFC - BALL BEARING - WELDED BASE FWF - 40 FRAME REDESIGN

|                               |                        |            |            |          |
|-------------------------------|------------------------|------------|------------|----------|
| FOR ADDITIONAL INFO REFER TO: | DETAIL                 | MODEL      | M.D. PAPER | DATE     |
| APPLIED PRACTICES             | CHECKED                |            |            |          |
| DIMENSIONS ARE IN INCHES      | ENGRG                  |            |            |          |
|                               | WF6                    |            |            |          |
|                               | QUALITY                |            |            |          |
|                               | ISSUED                 | M.D. PAPER |            | 04/27/94 |
| MATERIAL                      | SOLID MODEL: 52A107631 |            |            |          |

|              |              |           |              |
|--------------|--------------|-----------|--------------|
| TITLE        | SCALE: 0.250 | REF. No.: | SHEET 1 OF 1 |
| SIZE DRAWING | A            |           |              |

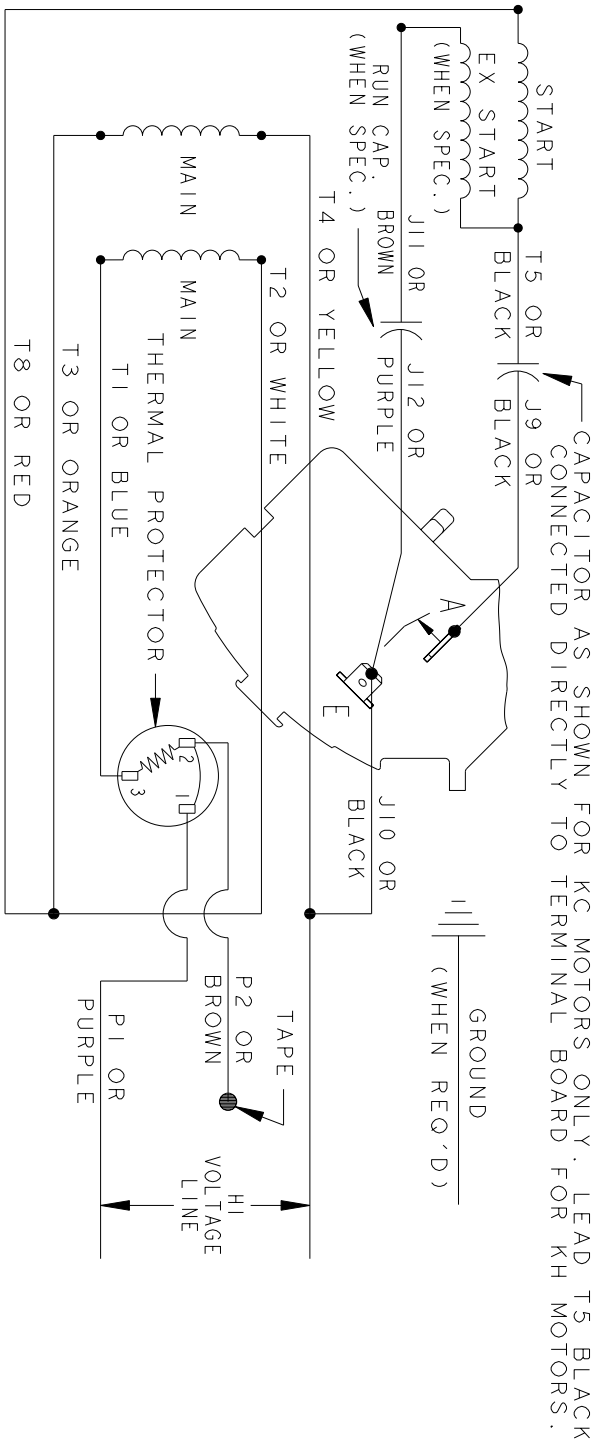
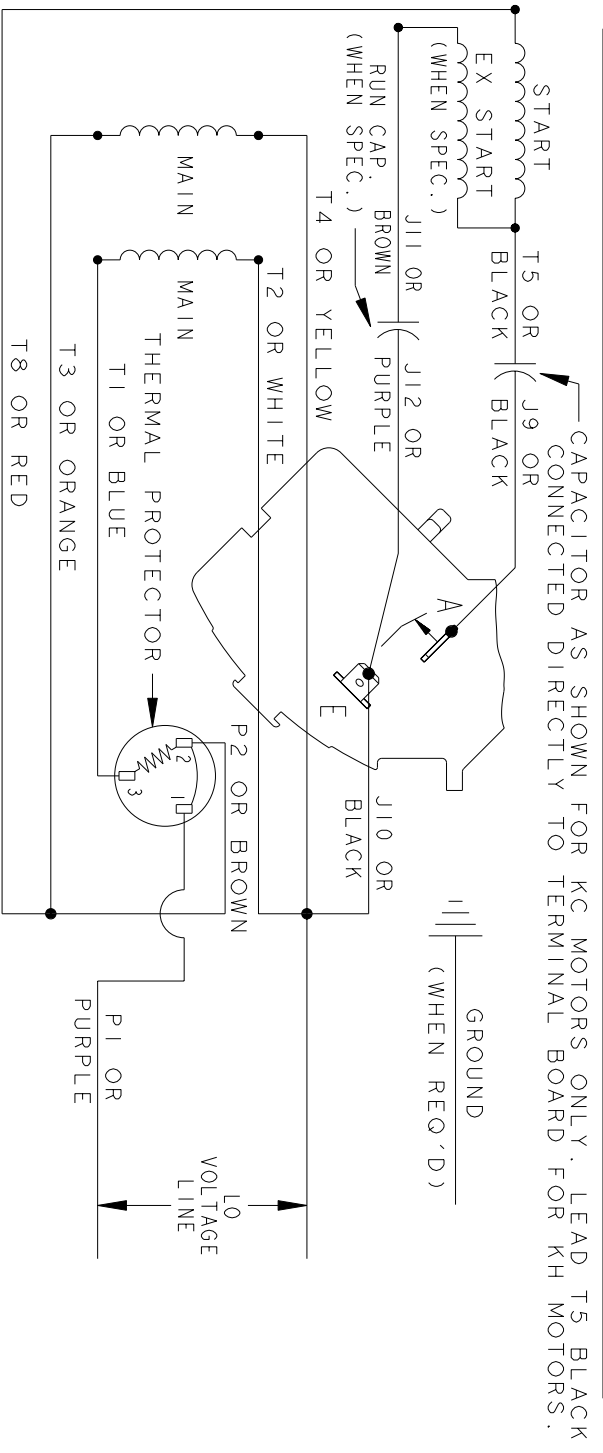


THIRD ANGLE PROJECTION

REVISIONS

| REV. | DESCRIPTION    | DATE     | APPROVED |
|------|----------------|----------|----------|
| 7    | UPDATED FORMAT | 01/05/06 | MAM      |

CCW/CW ROTATION - DUAL VOLTAGE  
 TYPE KC, KH OR KCR - WITH THERMAL PROTECTOR



NOTE#1 - TO REVERSE ROTATION, INTERCHANGE T8 RED AND J10 BLACK LEADS.  
 NOTE#2 - WHEN MORE THAN ONE CAPACITOR IS USED, CONNECT IN PARALLEL.  
 NOTE#3 - 115D958ABP5 - HIGH CURRENT CONTACTS.

SWITCH (C) - 115D958ABP5, SWITCH (H) - 115D958AA (USE 115D958DA FOR EP)

REF. DIAG. - 113A327, 119A9352 & 52A102102 CONNECTION LABEL - 52X332912

| SIGNATURES               |                          | DATE     |
|--------------------------|--------------------------|----------|
| MODEL                    | M.D.P.                   | 06/29/87 |
| DETAIL                   |                          |          |
| CHECKED                  |                          |          |
| ENGRG                    |                          |          |
| MFG                      |                          |          |
| QUALITY                  |                          |          |
| ISSUED                   | M.D.P.                   | 12/11/97 |
| APPLIED PRACTICES        |                          |          |
| DIMENSIONS ARE IN INCHES |                          |          |
| MATERIAL                 | SOLID MODEL: 52A105383BA |          |



REGAL-BELOIT CORPORATION

TITLE CONNECTION DIAGRAM

FME: 30 FRAME SWITCH REDESIGN

52A105383BA

|              |   |              |           |  |              |
|--------------|---|--------------|-----------|--|--------------|
| SIZE DRAWING | A | SCALE: 1.000 | REF. No.: |  | SHEET 1 of 1 |
|--------------|---|--------------|-----------|--|--------------|